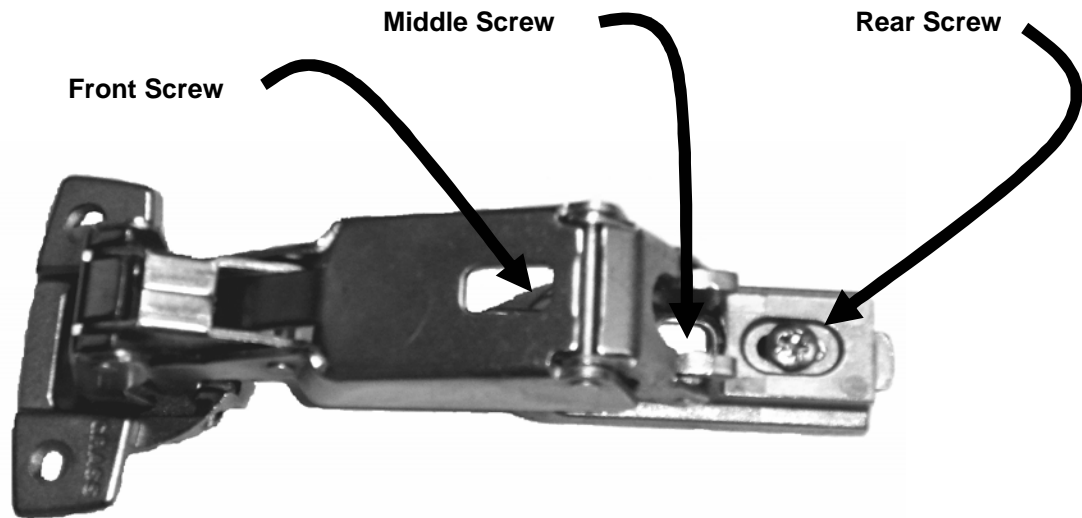


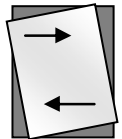
WAVE

CABINET DOOR ADJUSTMENT

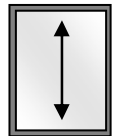
Occasionally, it becomes necessary to adjust a WAVE medicine cabinet door. To do this, open the door. There are three (3) screws visible on the backside of each hinge. Each screw works to independently adjust a door in one of three (3) directions. See picture and instructions below:



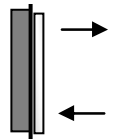
1. **LEVEL:** When a door does not appear to align horizontally against the cabinet frame, it needs to be leveled properly. Turn the **FRONT SCREW** clockwise to move the door toward the hinge. Turn the same screw counterclockwise to move the door away from the hinge. Working with the door height may be necessary to properly center the door visually against the cabinet frame.



2. **HEIGHT:** When a door is not vertically centered against the cabinet frame, its height needs adjustment. Both hinges must be adjusted together in order for the door to move up and down. Loosen both **MIDDLE SCREWS** simultaneously, then raise or lower the door. Tighten both screws when the door is centered. It may be necessary to also level the door while resetting its height in order for the door to be fully centered against the frame.



3. **DEPTH:** When a door binds in use, or will not close fully flat against the cabinet frame, its depth needs adjustment. Loosen the **REAR SCREW** to move the door in or out. Settle on a proper position that allows the door to open and close with ease, then tighten the screw. Both door hinges should be adjusted for depth independently in order for the door to sit flat against the frame.



8 6 6 - 7 9 4 - 9 2 8 3